

CTVUE Application Note

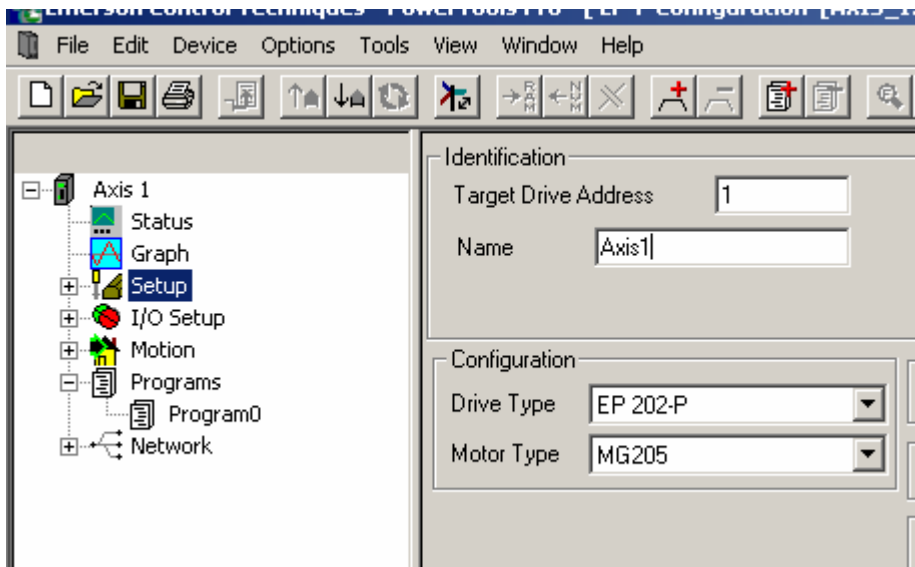
Number:CTVUE-1004, Revision 1, 8/12//2007

Subject: EP-P Import

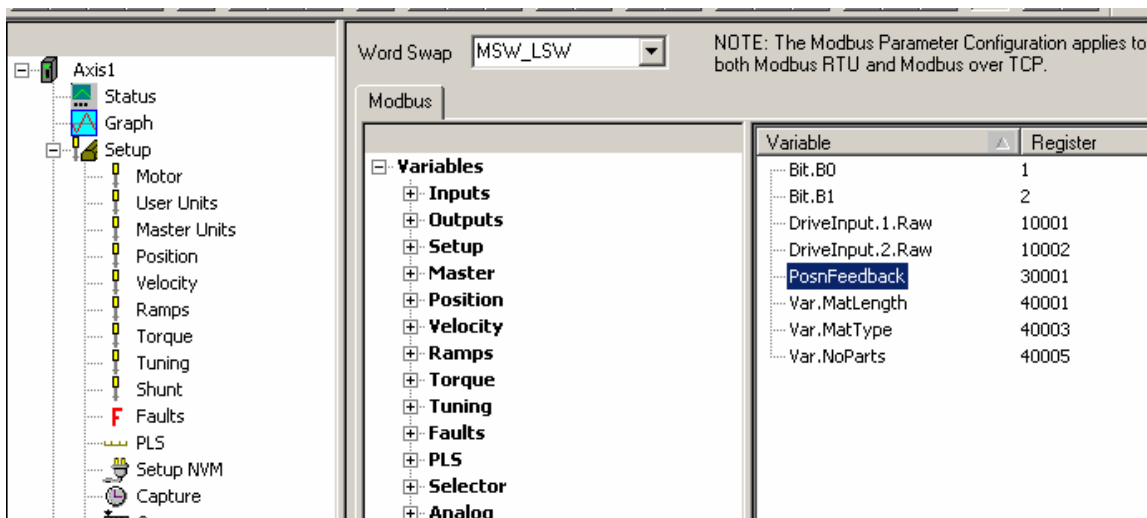
Introduction

The CTVue software has the capability of importing a .csv modbus parameter file which is created in PowerTools Pro. This application note describes how to import the parameters thus saving time recreating tags in the CTVUE.

1) Within PowerTools Pro rename the drive to a name with no spaces which must match the axis name in the CTVUE software such as “axis1”



2) Within in PowerTools Pro create the list of modbus variables that are to be read/write from the CTVUE HMI.Click the

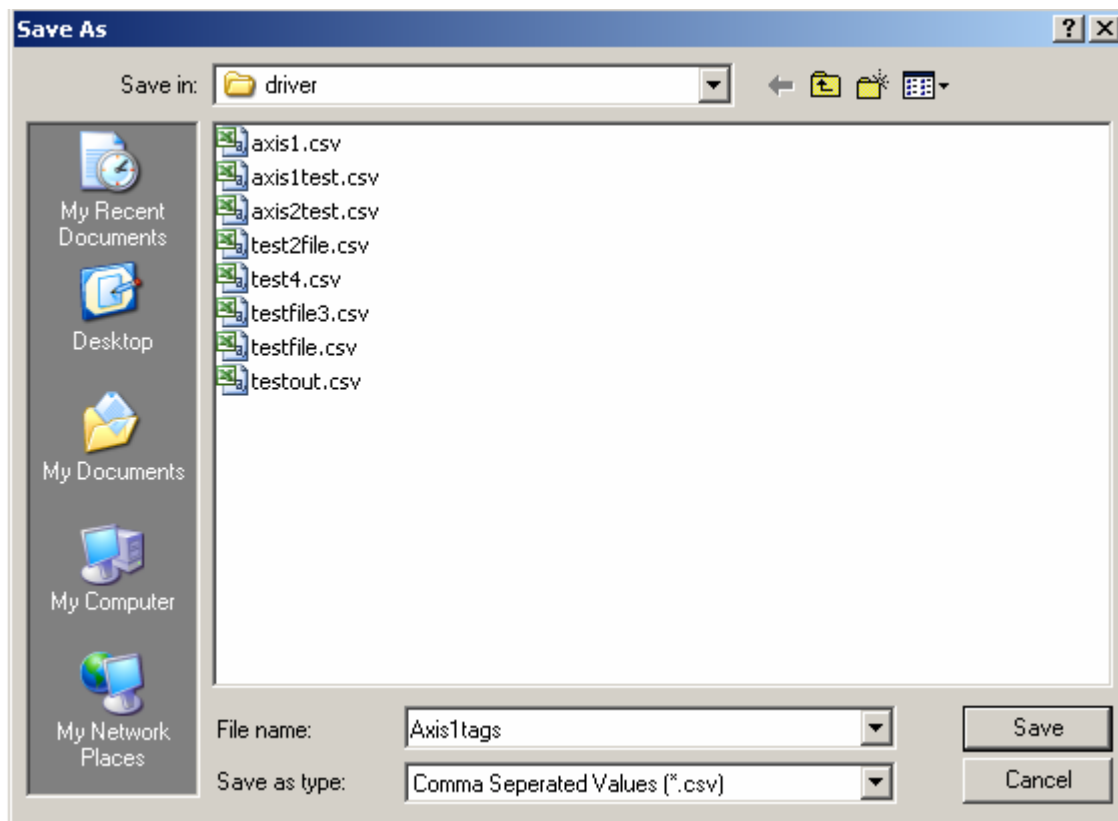
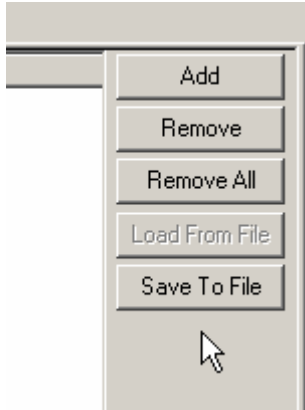


CTVUE Application Note

Number:CTVUE-1004, Revision 1, 8/12//2007
Subject: EP-P Import



3) Click the “Save to File” to save the modbus parameters to a .csv file and remember the location where you saved it so you can import the .csv file in CTVUE software.

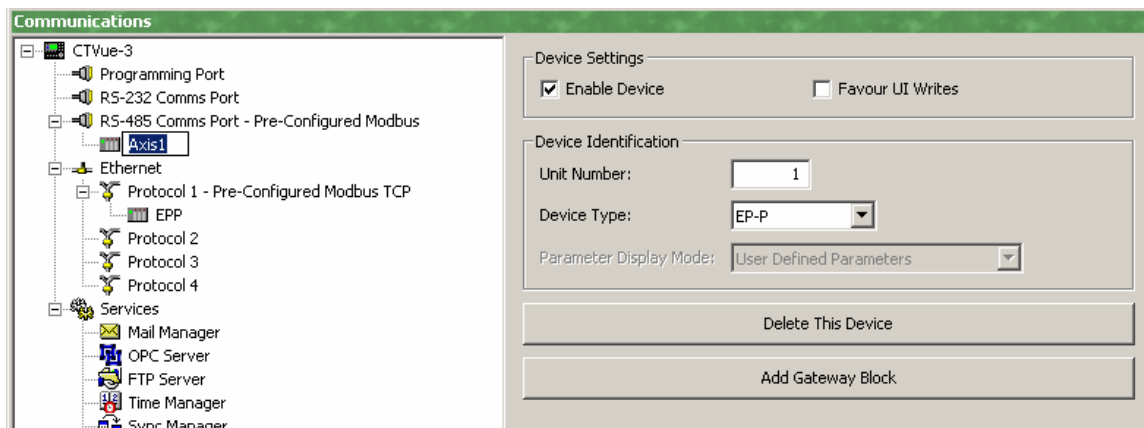
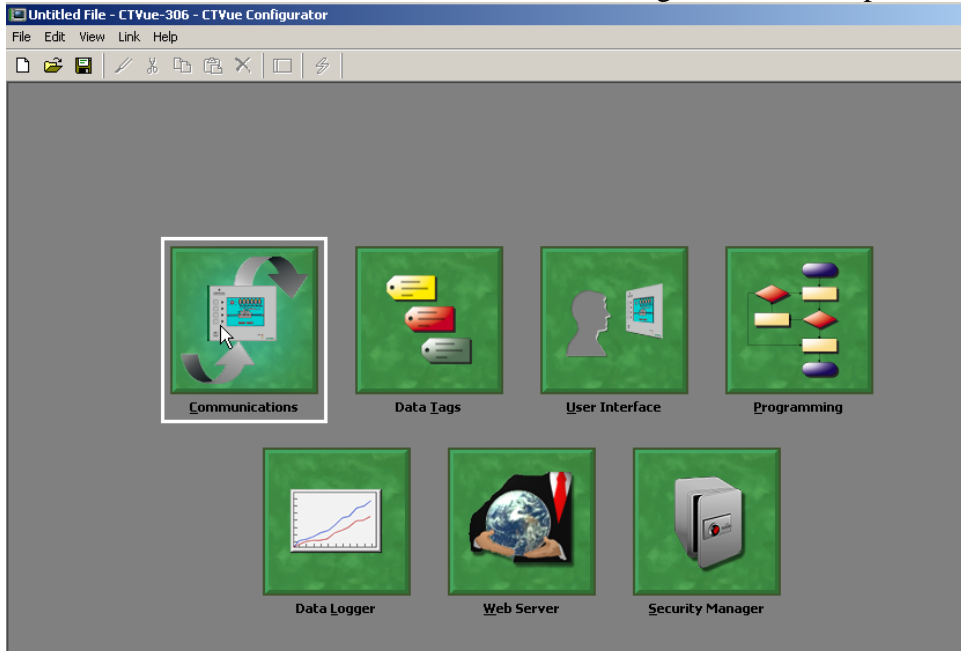


CTVUE Application Note

Number:CTVUE-1004, Revision 1, 8/12//2007

Subject: EP-P Import

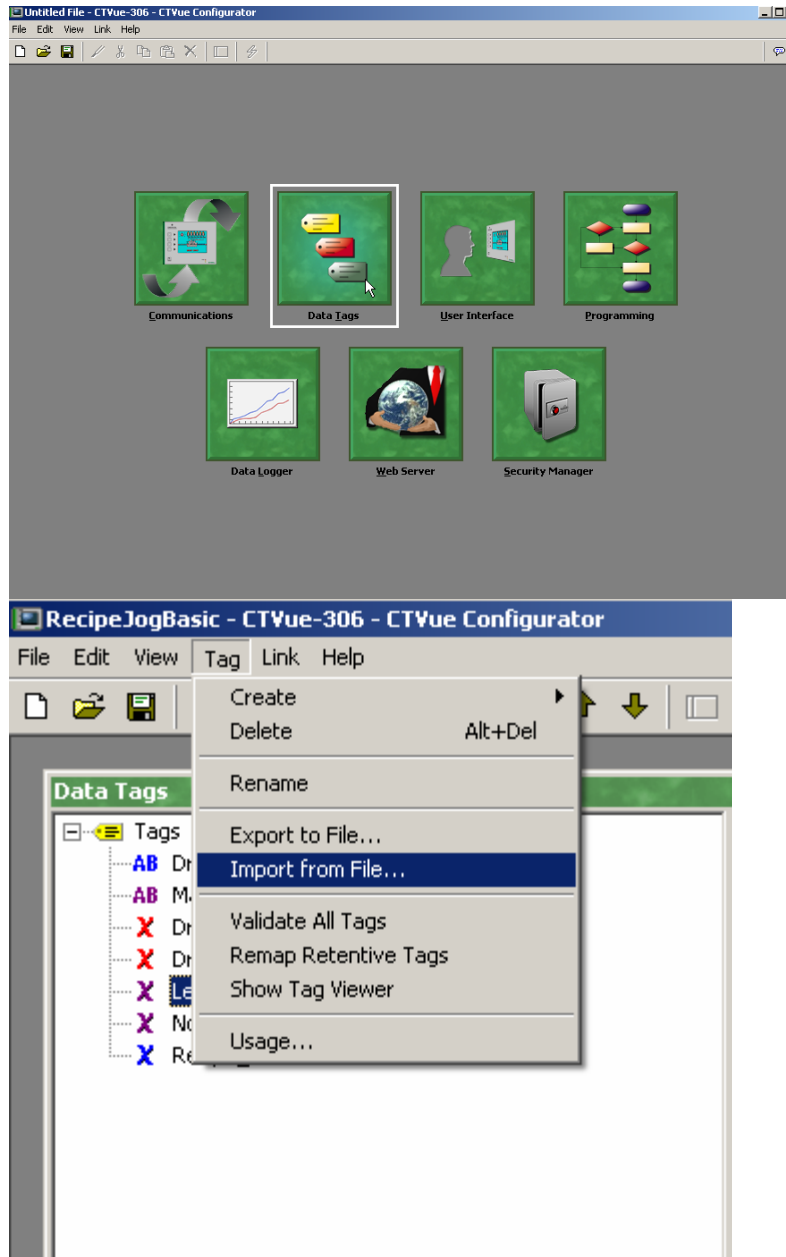
4) Open CTVUE communications section and setup the Pre-Configured Modbus Driver within CTVUE and select EP-P and make sure you change the “DRV” to match the axis name of the EP-P which in this case was Axis1. This is used in the tag window to map the data to the correct drive.



CTVUE Application Note

Number:CTVUE-1004, Revision 1, 8/12//2007
Subject: EP-P Import

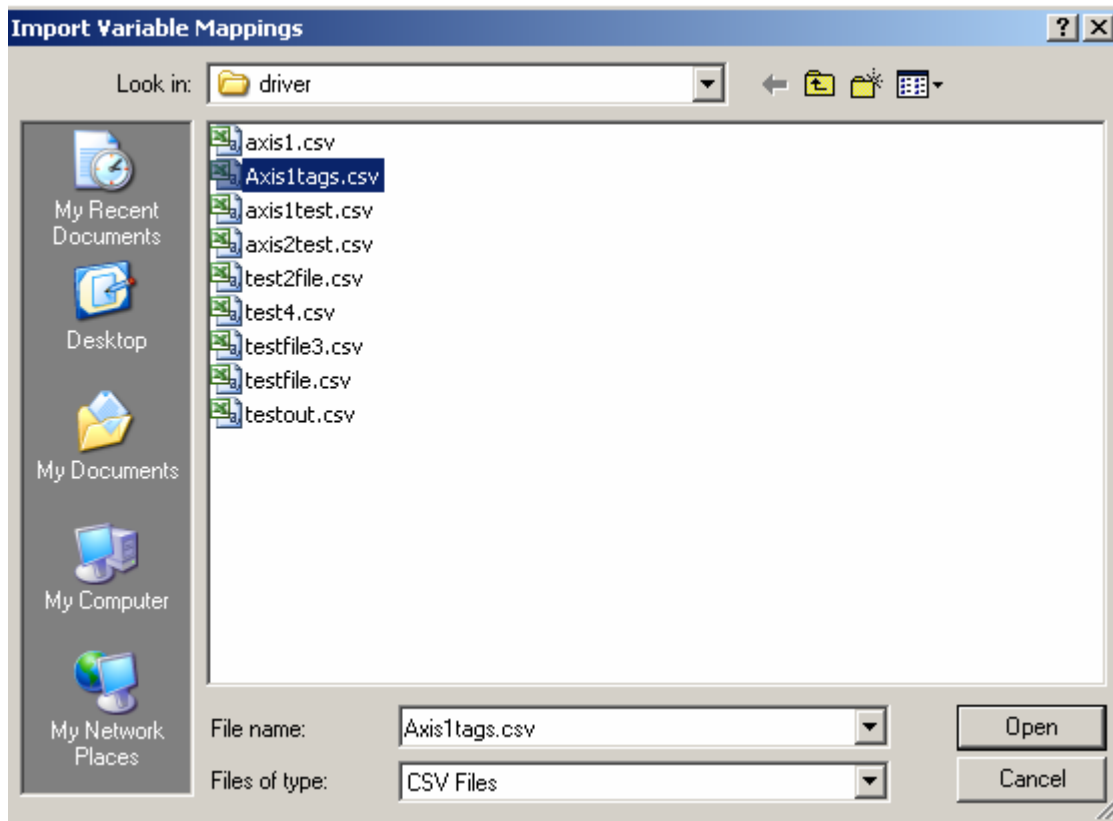
5)Open CTVUE tag section and select “import file” from the “tag” drop down menu



CTVUE Application Note

Number:CTVUE-1004, Revision 1, 8/12//2007
Subject: EP-P Import

6) navigate to the .csv file which you exported via PowerTools Pro.



CTVUE Application Note

Number:CTVUE-1004, Revision 1, 8/12//2007
Subject: EP-P Import



7) The tags will be imported and they will be appended by the modbus address of the drive. This ensures that parameters imported from more than one EP-P driver do not overwrite each other.

Data Tags

Tags

- ArrayMatLength
- Var_NoParts_01
- Var_MatType_01
- Var_MatLength_01
- PosnFeedback_01
- DriveInput_2_Raw_01
- DriveInput_1_Raw_01
- Bit_B1_01
- Bit_B0_01
- ArrayNoParts
- ArrayIndexer
- ArrayMatType

Variable Data

Mapping: Axis1 D40005 Edit...

Sign Mode: Driver Default

Access: Read and Write

Storage: Non-Retentive

Simulation: 0

Scaling and Transforms

Transform: None Round

Source Data: 32-bit Integer

Store As: 0 To: +10000

Display As: 0 To: +10000

Setpoint

Enable: No

SP Value: General Edit...

SCIGATE
Your Automation Partner

SCIGATE AUTOMATION (S) PTE LTD
No.1 Bukit Batok Street 22 #01-01 Singapore 659592
Tel: (65) 6561 0488 Fax: (65) 6562 0588
Email: sales@scigate.com.sg Web: www.scigate.com.sg
Business Hours: Monday - Friday 8.30am - 6.15pm



Published by the Engineering Department
Emerson Industrial Automation, Control Techniques Americas
12005 Technology Drive · Eden Prairie, MN · 55344
Phone: 800.397.3986 Fax: 952.995.8020